

# Butterflies

of  
the **South & Southeast**



Jaret C. Daniels

*Adventure Quick Guides*

YOUR WAY TO EASILY IDENTIFY BUTTERFLIES

# Adventure Quick Guides

Organized by color for quick and easy identification, this guide covers 133 species of the most common butterflies and moths found in the South and Southeast.

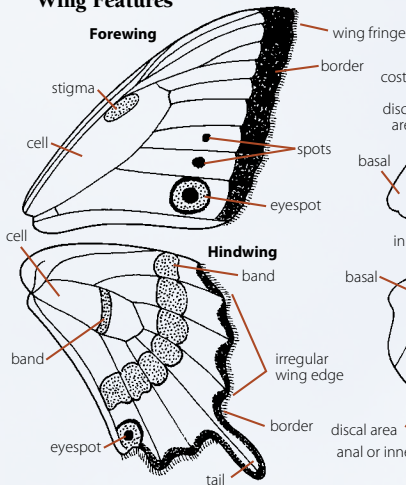
## KEY

- If the male and female of a species look the same or nearly the same, only one butterfly is shown.
- When the male and female are different colors, they are shown in their respective color sections with "male" or "female" labels.
- The average size of each species is listed, in inches, to the right of the butterfly.

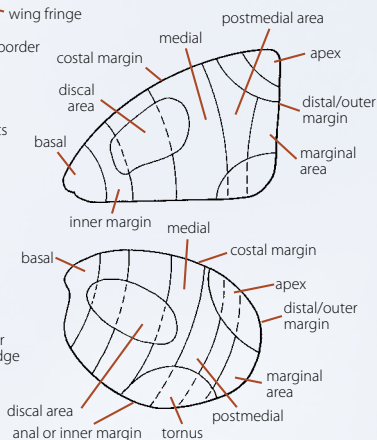
## BUTTERFLY AND MOTH ANATOMY

Knowing the basics about butterfly and moth anatomy is the easiest way to improve your identification skills. The two diagrams below will help you identify the basic parts of a butterfly or moth.

### Wing Features



### Wing Areas



10 9 8 7 6 5 4 3 2 1

### Butterflies of the South and Southeast

Copyright © 2021 by Jaret C. Daniels  
Published by Adventure Publications  
An imprint of AdventureKEEN  
310 Garfield Street South  
Cambridge, Minnesota 55008  
(800) 678-7006  
www.adventurepublications.net  
All rights reserved  
Printed in China  
ISBN 978-1-64755-213-8

Cover and book design by Lora Westberg  
Edited by Brett Ortler  
Proofreader: Emily Beaumont  
Cover photo: Gulf Fritillary (*Agraulis vanillae*) **Leena Robinson/shutterstock.com**

# Mostly black



1.25–1.9"

## Texan Crescent

brownish-black above; white spot bands; hindwing below light brown with central pale band



1.25–2"

## Great Purple Hairstreak

black with iridescent blue; hindwing below dull black with red spots and two tails; abdomen orange-red



1.4–2"

## Bordered Patch

wings above black with white spots and an orange band; hindwing below black with orange patch and cream spots along margin



1.7–2.2"

## Polka-Dot Wasp Moth

elongated wings and body; black wings with shiny blue sheen and white spots; shiny blue abdomen with white spots and an orange tip; slender white-tipped antennae; day flying



1.8–2.5"

## Red Admiral

forewing with central reddish band, white apical spots, hindwings with broad red border



1.8–2.75"

## Baltimore Checkerspot

rows of small white spots; large red-orange marginal spots; seen in wetlands; declining across region



2–2.9"

## Eastern Buckmoth

wings black with wide central white band with a black eyespot; dark gray abdomen with an orange tip



2.5–3.25"

## Ilia Underwing Moth

dark gray bark-like forewing mottled with brown, black, and cream markings; hindwing black with orange bands and light margin

## Mostly black



2.8–4"

### Zebra Heliconian

Elongated black wings with white or cream stripes; long, narrow abdomen; long-lived; larvae feed on passionflower vines



2.8–4.25"

### Red Spotted Purple

forewing velvety black, hindwing with iridescent blue scaling; mimics toxic Pipevine Swallowtail



male

3–3.75"

### Promethea Silkmoth

Wings black with light tan margins; flies during the day



3–4.2"

### Mourning Cloak

velvety black; broad irregular yellow wing borders, outer row of purple-blue spots; adults overwinter; young larvae gregarious



male

3–5"

### Pipevine Swallowtail

overall black, males have iridescent greenish-blue hindwings; fast, low flight; distasteful to many predators



male

3.25–5"

### Black Swallowtail

black with yellow spot bands, black-centered eyespot near tail; female with less yellow; common garden butterfly



3.5–4.5"

### Polydamus Swallowtail

black with yellow spot band along wing margin; lacks tails; fast, erratic flight; distasteful to many predators



male

3.5–5"

### Spicebush Swallowtail

pale green spots along wing margins, hindwing with extensive greenish-blue scaling, orange eyespot and tail

## Mostly black



### **Diana Fritillary**

large; black with iridescent blue spots on outer half; mimics toxic Pipevine Swallowtail



### **Eastern**

### **Tiger Swallowtail**

female dark form is mostly black and may have faint darker black stripes; hindwing with blue scaling and tail; mimics toxic Pipevine Swallowtail



### **Palamedes Swallowtail**

brownish-black with cream spot bands; yellow streak in hindwing tail; hindwing below with yellow line near abdomen



### **Black Witch**

large; forewing somewhat pointed; wings dark brown with black, cream and often violet markings; bark-like appearance





**JARET C. DANIELS, Ph.D.**, is a professional nature photographer, author, native plant enthusiast, and entomologist at the University of Florida, specializing in insect ecology and conservation. He has authored numerous scientific papers, popular articles, and books on gardening, wildlife conservation, insects, and butterflies, including butterfly field guides for Florida, Georgia, the Carolinas, Ohio, and Michigan. Jaret currently lives in Gainesville, Florida, with his wife, Stephanie.

All images copyrighted.

All photos by **Jaret C. Daniels**, unless otherwise noted.

Photos identified by page in descending positions a, b, c, d, e, f, g, h.

Used under license from Shutterstock.com:

**Alan B. Schroeder:** 2g; **Barbi Hofer:** 17c; **Brett Hondow:** 23a; **Buquet Christophe:** 17a, 18b; **Charlie Floyd:** 19a; **Chase D'animulls:** 16g; **Cosmin Mancu:** 23d; **Danita Delimont:** 20b, 20c; **dossyl:** 5a; **Elliotte Rusty Harold:** 7b, 7c; **Flecksy:** 2a; **Frode Jacobsen:** 7f, 8f, 18d; **Gerald A. DeBoer:** 6a; **Gualberto Becerra:** 18c; **Ian Maton:** 11c; **IrinaK:** 23b; **Jack Nevitt:** 14c; **James Laurie:** 12d; **Jay Ondreicka:** 22g; **Jim and Lynne Weber:** 3c, 4c, 4e, 9f, 10, 12c, 16a, 19h; **johannviloria:** 4d; **Kevin Jarrell:** 10e; **Leena Robinson:** 14b, 16e; **LorraineHudgins:** 10c; **Luba Shushpanova:** 3a; **Marci Paravia:** 18h; **Maria Jeffs:** 2b; **Marsha Mood:** 21e; **Matthew L Niemiller:** 8g; **Melinda Fawver:** 11b, 18g; **Mirek Kijewski:** 22h; **neil hardwick:** 22c; **Paul Reeves Photography:** 7g, 7h, 9d, 14d, 18e, 19d; **Paul Sparks:** 2c, 2f, 4b; **Rudy Umans:** 20d; **samray:** 7e, 8h, 11a; **Sari O'Neal:** 4a, 8e, 9e, 16d; **Stephanie Frey:** 17d; **Steven R. Smith:** 15d, 17b; **TechnoSavage:** 7a, 9g; **Tom Franks:** 16b; **Tommy Daynjer:** 2d; **Tyler Fox:** 4c, 22d; **Vinicius R. Souza:** 4d; **Wingman Photography:** 8c

These images are licensed under the Attribution 2.0 Generic (CC BY 2.0) license, which is available at <https://creativecommons.org/licenses/by/2.0/>:

**Andy Reago & Chrissy McClarren:** 2h, 19e

This image is licensed under the Attribution 3.0 Generic (CC BY 3.0) license, which is available at <https://creativecommons.org/licenses/by/3.0/>: **Forest & Kim Starr:** 12b

This image is licensed under the CC0 1.0 Universal (CC0 1.0) Public Domain Dedication license, which is available at <https://creativecommons.org/publicdomain/zero/1.0/>: **ALAN SCHMIERER:** 6g

## Adventure Quick Guides

# Only South & Southeast Butterflies & Moths

Organized by color for quick  
and easy identification



**Simple and convenient—narrow your choices  
by color, and view just a few species at a time**

- Pocket-size format—easier than laminated foldouts
- Professional photos showing key markings
- Easy-to-use information for even casual observers
- Size ranges for quick comparison and identification
- The basics of butterfly and moth anatomy

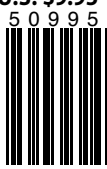
*Collect all the Adventure Quick Guides for your area*



**NATURE/BUTTERFLIES/SOUTH & SOUTHEAST**

ISBN 978-1-64755-213-8

**U.S. \$9.95**



**PUBLICATIONS**  
*Adventure*  
an imprint of AdventureKEEN